

SUBJECT: <b>PCM REPROGRAMMING FOR DTC P1540 AND DTC P1541</b>		No: <b>TSB-06-13-002</b>	
		DATE: <b>April, 2006</b>	
		MODEL: <b>See below</b>	
CIRCULATE TO:	<input type="checkbox"/> GENERAL MANAGER	<input type="checkbox"/> PARTS MANAGER	<input checked="" type="checkbox"/> TECHNICIAN
<input checked="" type="checkbox"/> SERVICE ADVISOR	<input checked="" type="checkbox"/> SERVICE MANAGER	<input checked="" type="checkbox"/> WARRANTY PROCESSOR	<input type="checkbox"/> SALES MANAGER

**PURPOSE**

The Direct Ozone Reduction (DOR) system is monitored with a radiator sensor. On a small percentage of vehicles, the radiator sensor may improperly indicate a fault to the ECM and cause the MIL to turn on and DTC P1540 and P1541 to set. To correct this condition on affected vehicles, reprogram the ECM with a software recalibration as described in this bulletin, which will desensitize the DOR system monitor.

**AFFECTED VEHICLES**

2006 Galant 2.4L MIVEC A/T models with California emissions produced before 2/23/06 (Vehicles produced on or after this date are corrected for this condition during production.)

**PROCEDURE**

1. Check the underside of the hood to verify that there is no label previously installed to indicate that this TSB reprogramming has already been done.



**BATTERY VOLTAGE (AS MEASURED AT THE BATTERY POSTS WITHOUT ELECTRICAL LOAD) MUST BE 12.4V OR HIGHER IN ORDER TO REPROGRAM THE PCM.**

2. Using the MUT-III, verify that the vehicle's ECU part number is listed in the table in Step 13. If the Software P/N is the same as or higher than the Software P/N in the table, the PCM has already been reprogrammed for this concern. Do not continue with this

bulletin procedure.

3. Use the MUT-III to erase all DTCs set in the PCM.

#### 4. **IMPORTANT**

**The following equipment is required for CAN reprogramming:**

- MUT-III PC
- Reprogramming Database on DVD-ROM (**Reflash Update CD 4/06** or later for this concern)
- VCI (Vehicle Communication Interface) - MB991824
- MUT-III main harness A (blue) - MB991910
- USB 2.0 cable - MB991827
- "Engine Compartment/Control Module" labels - p/n MSSF-024G-00

**Connect this equipment in the same manner as for normal vehicle diagnosis.**

5. Verify that your MUT-III is at STV Version 13.1, and that it has the most current version of the reprogramming database:

a. Select "Special Function", then select "ECU Reprogramming."

b. Select "Database File Display". The database version is displayed in the top right corner of the screen. Make sure the database version is **N06031 or greater**.

c. If the database version is less than N06031, go to Step 6 to transfer the new reprogramming data from the Reflash Update CD 4/06 to the MUT-III hard drive.

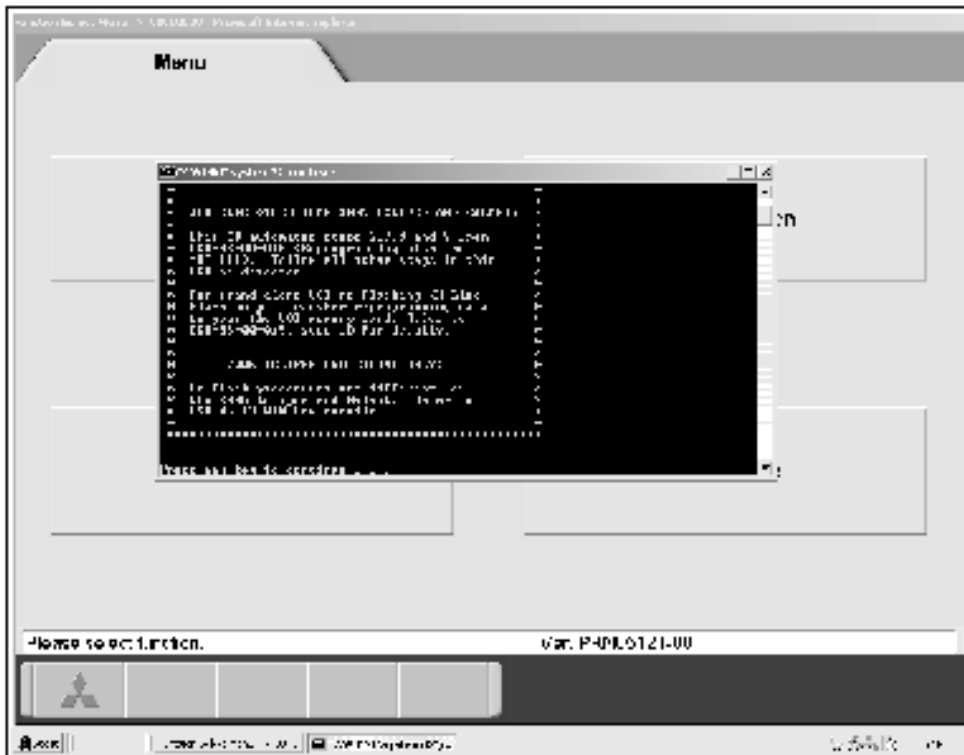
d. If the database version is N06031 or greater, go to Step 7.

6. Install **Reflash Update CD 4/06** into the PC's DVD-ROM drive.

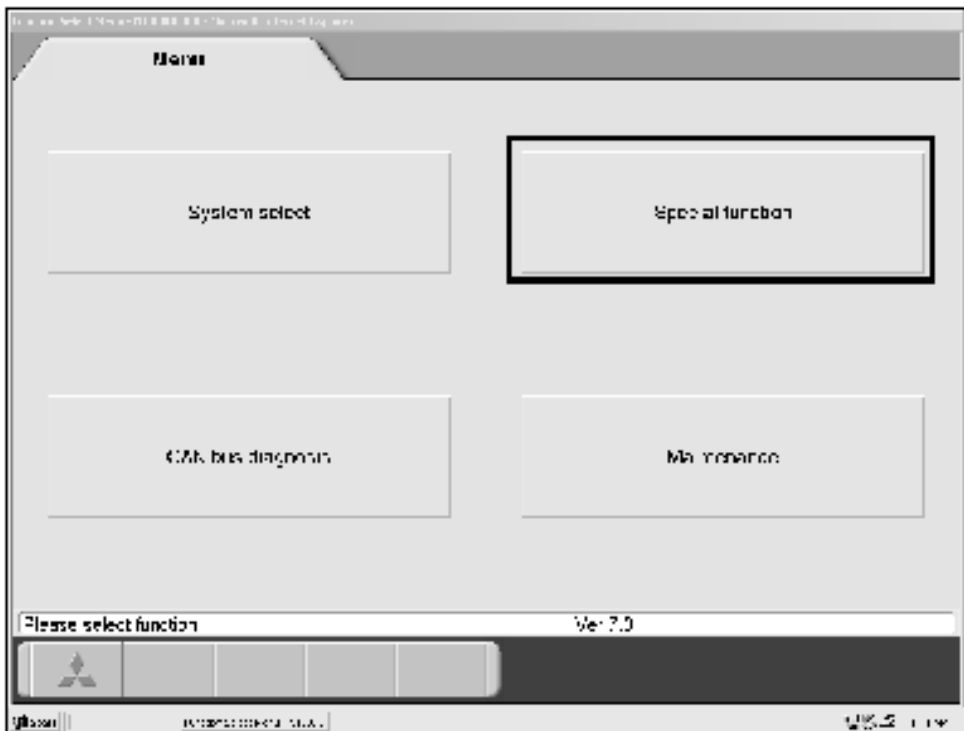
a. Follow the instructions on the screen. The system will automatically transfer the reprogramming data onto the PC's hard drive.

**IMPORTANT**  
**DO NOT DISCONNECT**

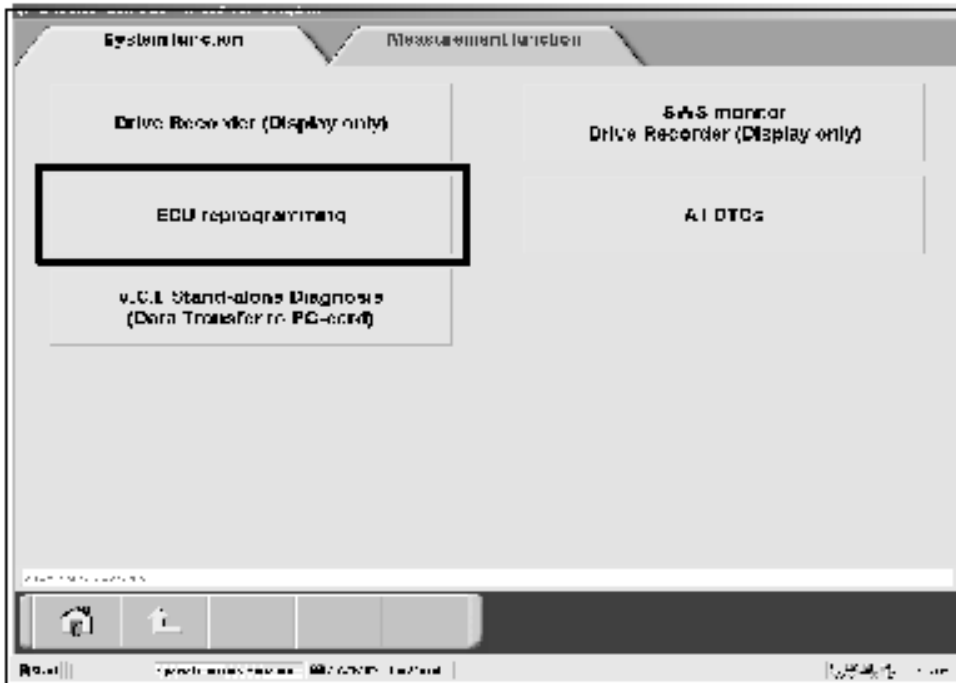
**THE MUT-III LAPTOP.  
DO NOT USE VCI  
STANDALONE  
REPROGRAMMING.**



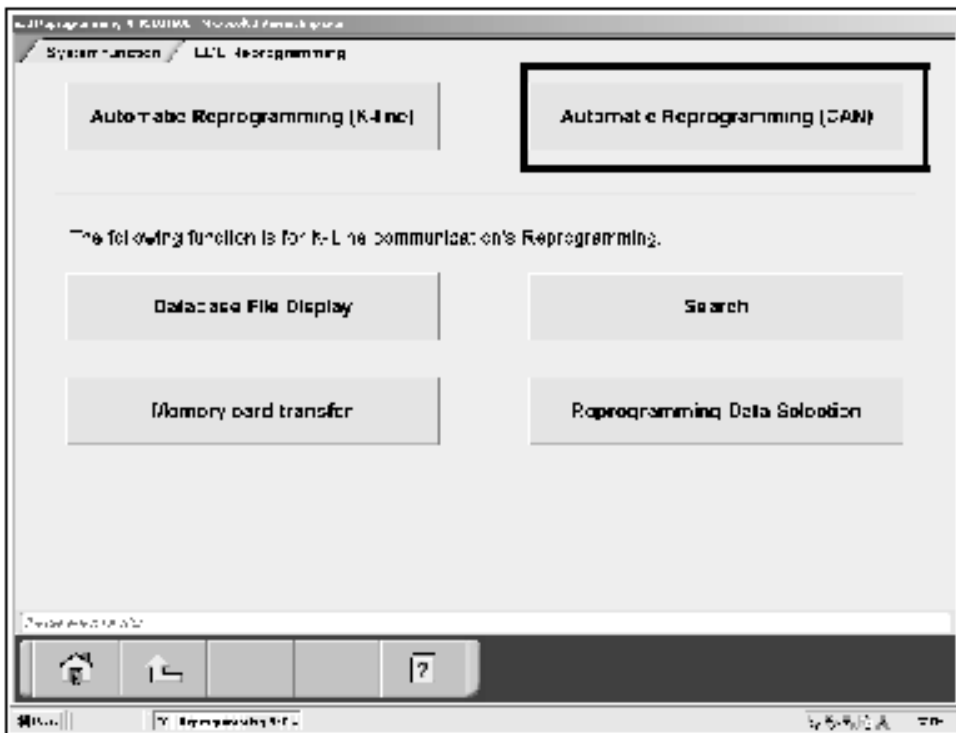
**7.Select "Special  
Function."**



8. Select "ECU reprogramming."

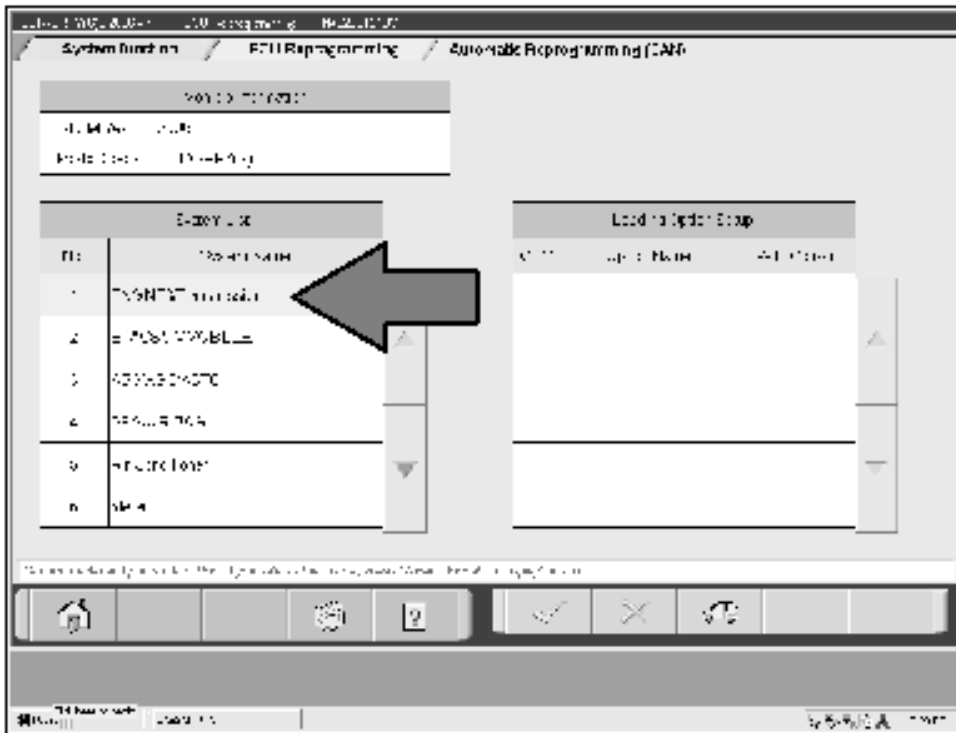


9. Select "Automatic Reprogramming (CAN)."

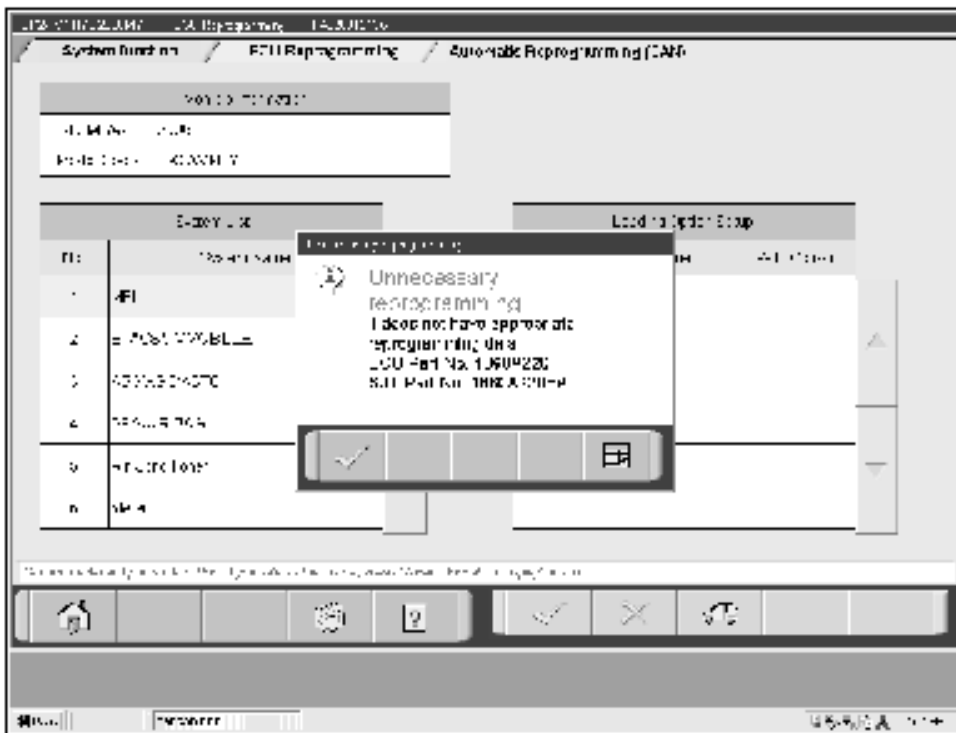


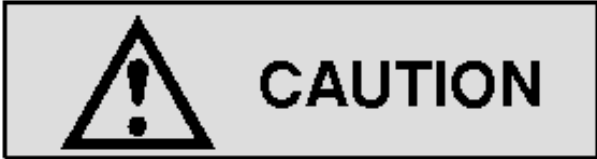
10. Select Engine and Transmission, then click on the check mark.

A message will advise you that the system will "Automatic Search the data." Click on the check mark to continue.



a. If the PCM is already reprogrammed for this concern, this screen will display. If this message displays, do not continue with this reprogramming procedure.





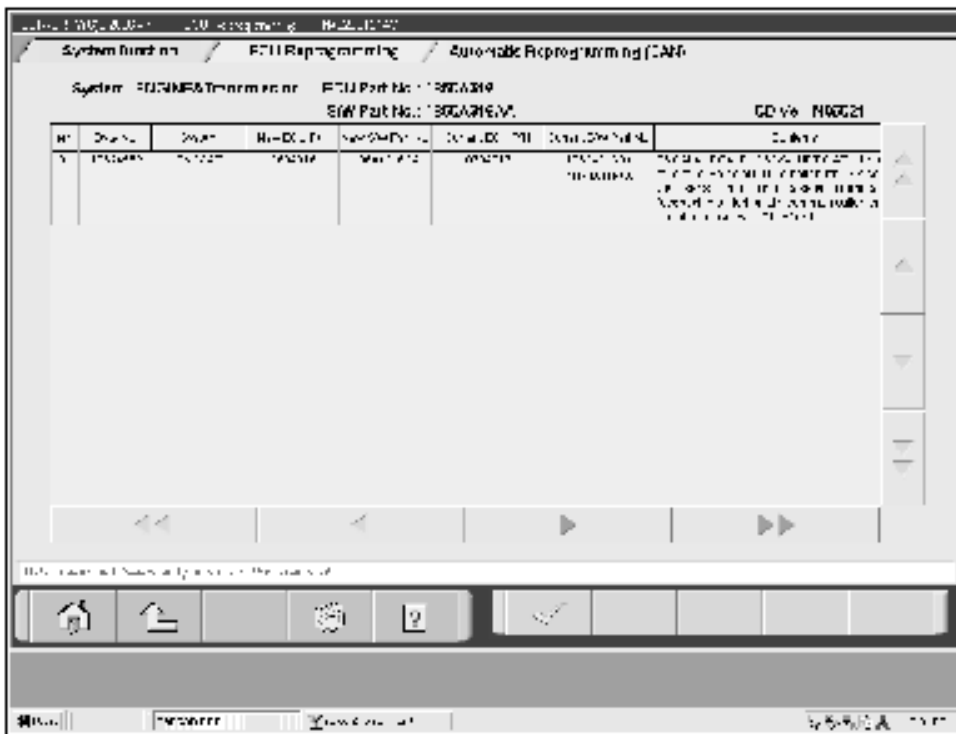
**DO NOT DISTURB THE HARNESS CABLES OR CONNECTIONS. INTERRUPTION DURING THE PROGRAMMING PROCESS COULD CAUSE THE PCM TO LOSE DATA OR PREVENT FUTURE PCM REPROGRAMMING.**

11. The CAN database screen will display.

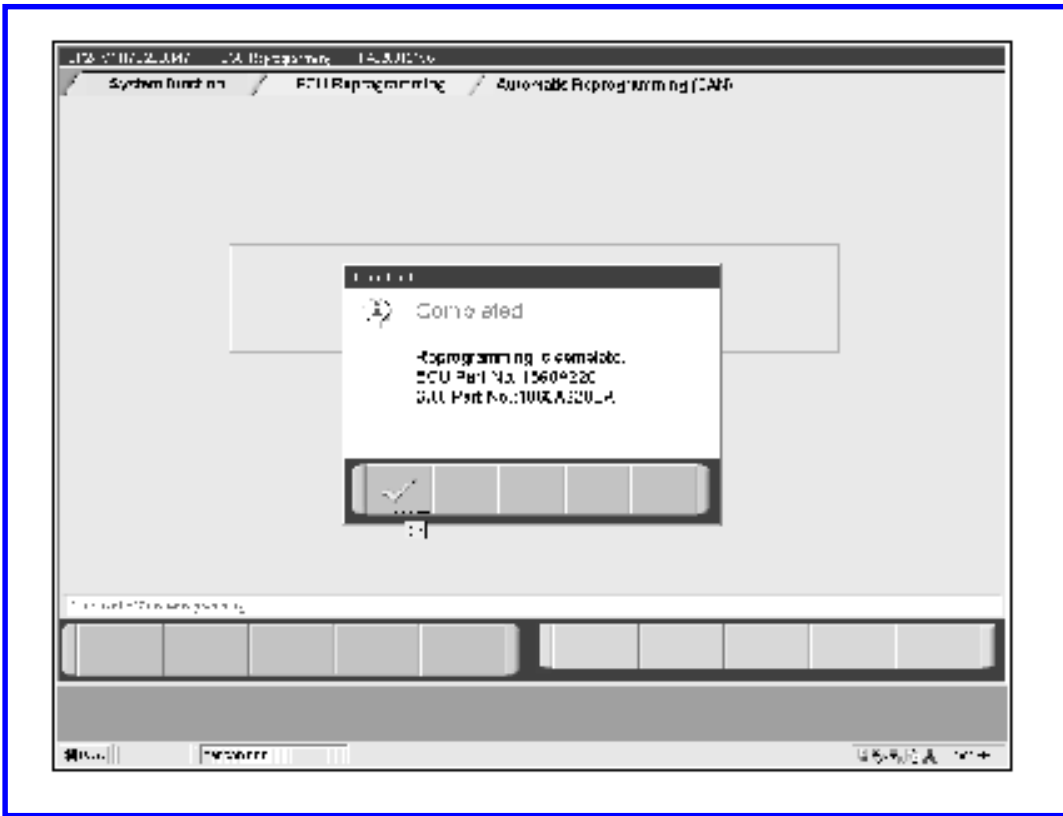
(If more than one row is displayed in the table, select the appropriate ECU part number.)

Click on the check mark to begin reprogramming.

NOTE: It will take up to 10 minutes to complete the reprogramming.



12. This message will display when the reprogramming is successfully completed.





13. After reprogramming, the new ECU part number and software part number will display. Verify that they are the same as those listed below. Note this information.

			DISPLAY ON MUT-III AFTER REPROGRAMMING		
MODEL	ECU P/N	MUT-III REFLASH DATABASE	ECU P/N	Software P/N (ROM ID)	VENDOR #
2006 Galant 2.4L MIVEC Calif. emissions	1860A316	1862A552	1860A316	1860A316CA	E6T41683H20

14. Turn the ignition switch to OFF. Disconnect the MUT-III from the vehicle. Wait at least 10 seconds, then start the engine to verify proper operation.

15. Using a ball-point pen, enter the appropriate PCM part number, vendor number, ROM ID, this TSB number (TSB-06-13-002), your dealer code, and the current date on the Engine Compartment and Control Module Label (part no. MSSF-024G-00).

	<b>AUTHORIZED MODIFICATIONS</b>	These Modifications Have Been Approved as Appropriate by EPA and CARB	
PART NUMBER	VENDOR CODE	ROM ID #	P/N Vndr Code TSB Dir Code Date
TSB		ENG	
ENG		A/T	
A/T	DEALER CODE	DATE / /	
<i>Engine Compartment Label</i>		<i>Control Module Label</i>	

16. Carefully remove all dirt and oil from a vacant area near the VECI label on the underside of the hood, and affix the Engine Compartment label.

17. Affix the Control Module Label to the PCM.

## WARRANTY INFORMATION

PCM Reprogramming for DTC P1540 and DTC P1541	
<i>Nature Code:</i> 51D	<i>Cause Code:</i> 480
<i>Labor Operation No.</i> 13850100	<i>Time Allowance:</i> 0.3 hr.
<i>Warranty Coverage:</i> 8 years / 80,000 miles	
<i>Special Warranty Information:</i> Normal warranty procedures apply.	

Mitsubishi Motors North America, Inc.

The information contained in this bulletin is subject to change. For the latest version of this document, go to the Mitsubishi Dealer Link, MEDIC, or the Mitsubishi Service Information website ([www.mitsubishitechinfo.com](http://www.mitsubishitechinfo.com)).